



Welcome to EDP

Briefing for Primary 5 parents

17 January 2020

Briefing Overview

- Transition to Primary 5
- Direct School Admission
- Changes to PSLE scoring system
- Building Partnership between school and parents
- Sharing by HODs
 - English Language and Mother Tongue
 - Mathematics and Science
 - P5 Adventure Camp

P5 Subject Teachers

Class	English Language	Mathematics	Science
5 Diligence	*Mdm Mah	Mr Sani	Ms Rejini
5 Perseverance	Mrs Goh	Mrs Ow Yong	Mr Matt Lim (Science) Miss Guo (MT & Form Teacher)
5 Integrity	Mrs Jay	Ms Lim Hui Qi	Mrs Theresa Lee (Science) Mdm Ng (MT & Form Teacher)
5 Compassion	*Mdm Valli	Mr Jonathan Lo	Mr Jonathan Lo
5 Respect	Mrs Agnes Choh	*Mdm Salinah	Mdm Salinah
5 Responsibility	Mrs Fernandez	*Mr Don Tay	Mrs Hayashi
Foundation Subjects	N.A.	FDN MATH: Miss Teo	FDN SCIENCE: Ms Rejini

* Also the Form Teacher

Mother Tongue Teachers

P5 Chinese Language

Group 1 (HCL)	Mdm Ng Li Yen
Group 2	Mdm Tan Poh Bee
Group 3	Mdm Zheng Li
Group 4	Miss Guo Ling Lan
Group 5	Mr Kee Loi Seng
Group 6	Mdm Tan Yian Loo
Group 7 (FCL)	Mr Hong King Yong

P5 Malay Language

Group 1	Mdm Norashikin
Group 2	Mdm Nazreen

* Higher Mother Tongue pupils stay back on Thursdays for HMT lessons

Transition to Primary 5


- Start of 2-year journey towards PSLE
- Increased academic demand and rigour from Primary 4
- Greater participation in CCA and leadership roles
- Strong Foundation in Primary 5 is necessary for good PSLE performance
- Remedial lessons on Mondays and Thursdays for students who need extra guidance
- Keep the P3/4/5 Textbooks (especially Science) as your child will need them for revision for PSLE.

Personnel to support Well-being

- School Development Team:
 - Upper Primary Year Head: Mr Matt Lim
- AED (Learning Behavioural Support) – Mr Muhammad, Mr Fadzil
- School Counsellor – Miss Clara Lim





Assessments and Examinations

CNA Lifestyle CNA Insider Singapore Asia World Business Sport Technology Health Commentary Podcasts Video


 **By Lianne Chia**
@LianneChiaCNA

28 Sep 2018 02:00PM
(Updated: 29 Sep 2018 11:06AM)

33,017 shares


Bookmark



Singapore

Fewer exams, assessments in schools to reduce emphasis on academic results: MOE

The changes, which will take effect starting next year, will see the removal of weighted assessments and exams for Primary 1 and 2, as well as the removal of mid-year exams for several other levels.



Assessments and Examinations

	Assessment	Weightage
Term 1	-	-
Term 2	WA2	15%
Term 3	WA3	15%
Term 4	SA2	70%
Overall		100%

Subject Based Banding

- Decision to be made at the end of Primary 5 on subject-based banding (SBB).
 - Carry on with Higher Mother Tongue (criteria of 65%)
 - Moving to Foundation Subjects (if unable to cope with Standard subjects)
- Remain in the same class in Primary 6 (2021) for most pupils.



Direct School Admission (DSA)

Direct School Admission

- Direct School Admission (DSA) for Secondary Schools provides students an opportunity to enrol in a school based on their talents, potential and achievements that cannot be demonstrated through the Primary School Leaving Examination (PSLE).
- P6 students and parents can make applications via a common online portal from the 2020 DSA-Sec Exercise.

Direct School Admission

- Primary 6 students can apply for DSA-Sec based on a wide-range of talents, including:
 - Sports and games
 - Visual, literary and performing arts
 - Debate and public speaking
 - Science, mathematics and engineering
 - Languages and humanities
 - Uniformed groups
 - Leadership (e.g. prefects)

Direct School Admission

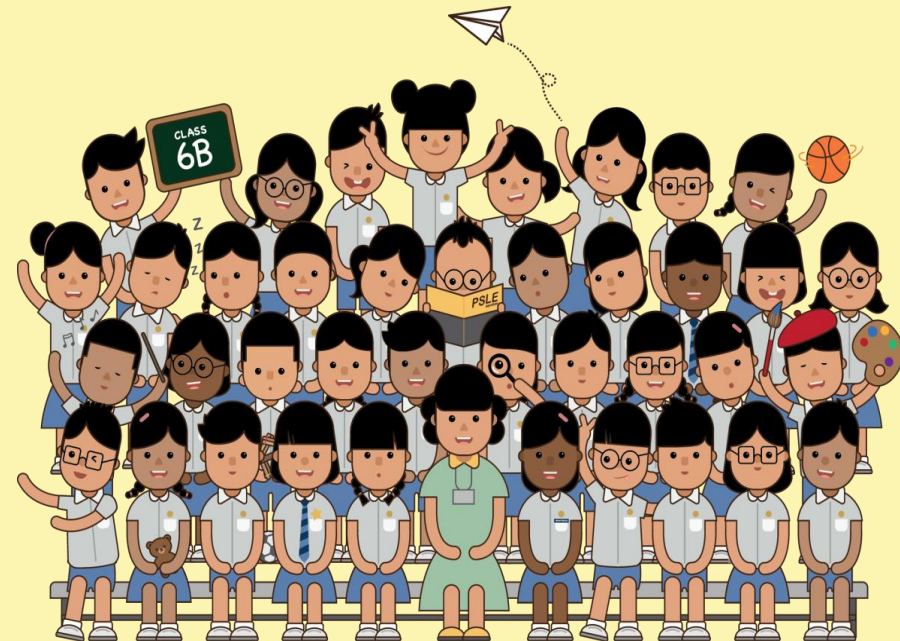
Schools	Areas
Canberra Secondary	Photography/Videography (Girls and Boys)
Woodlands Secondary	Community and Youth Leadership (Girls and Boys)
Ahmad Ibrahim Secondary	Critical Social Inquiry and Media Literacy (Girls and Boys), Music (Girls and Boys), Outdoor/Adventure Education (Girls and Boys)
Chung Cheng High (Yishun)	Basketball (Boys), Chinese Dance (Girls), Chinese Orchestra (Girls and Boys), Choir (Girls and Boys), Concert/ Symphonic Band (Girls and Boys), Drama - Chinese (Girls and Boys), Fencing (Girls and Boys), Guzheng Ensemble (Girls and Boys), International Dance (Girls and Boys), Volleyball (Girls and Boys), Wushu (Girls and Boys,)

EDP DSA 2019

- Some of the schools our students had DSA to in 2019 (for 2020):
 - Singapore Chinese Girls' School
 - School of Science & Technology
 - ACS (I)
 - Presbyterian High
 - Yishun Town
 - Cedar Girls'
 - Raffles Institution
 - Christ Church
 - Admiralty
 - Anderson
 - Orchid Park

UPDATES ON PSLE SCORING & S1 POSTING FROM 2021

IT'S PART OF A BIGGER STORY



2019 BRIEFING FOR P4 PARENTS

FROM T-SCORE TO WIDER SCORING BANDS

(a) Reduces fine differentiation of students

- Students with similar scores in each subject will be grouped into wider bands measured in 8 ALs.

(b) Reflects a student's individual level of achievement

- Unlike the current T-score, the students' AL for each subject will reflect their level of achievement, rather than how they have performed relative to their peers.

AL	RAW MARK RANGE
1	≥ 90
2	85 – 89
3	80 – 84
4	75 – 79
5	65 – 74
6	45 – 64
7	20 – 44
8	< 20

USE OF HCL FOR ADMISSION INTO SAP SCHOOLS



USE OF HCL FOR ADMISSION INTO SAP SCHOOLS

New System

The HCL posting advantage for entry to SAP schools will continue

- Students will be ranked taking into account their performance in HCL.
- This posting advantage applies before the tie-breakers for S1 posting.



Current System

Students' HCL grades give posting advantage for SAP schools

- Currently, for admission to SAP schools, students are awarded bonus T-score points based on their HCL grade:
 3 points for Distinction
 2 points for Merit
 1 point for Pass

1st		7	NO HCL
2nd		8	DISTINCTION
3rd		8	MERIT
4th		8	PASS
5th		8	NO HCL
6th		9	DISTINCTION

PRESENTATION OF RESULTS IN ACHIEVEMENT LEVELS



PRESENTATION OF RESULTS IN ALs

- Starting from the 2020 P5 cohort, schools will present school-based examination results of P5 and P6 students in ALs.
 - 2020 P6 students will not be affected, nor will P1 to P4 students.
- This will help familiarise students and parents with the new AL scoring system.
- The AL reflects the mastery of a broader curriculum, rather than for topical or component performance. As such, **AL will not be reflected for weighted assessments (WA).**

Holistic Development Profile

Page: 1 of 1
Date: 29 Nov 2020

Name : Joyce
Age on 1st Jan : 10
Class : 5 Challenge S/N : 5
Form Teacher : Miss Tan
Co-Form teacher : Miss Low

Identification No: T09XXXXXF
Subject Combination: 3S1F(FSC)

SUBJECT	TERM 3: WA		END OF YEAR EXAM		OVERALL	
	Mark	Grade	Mark	AL	Mark	AL
ENGLISH LANGUAGE	85		88	2	86	2
MATHEMATICS	74		76	4	75	4
FOUNDATION SCIENCE	65		74	B	70	B
CHINESE LANGUAGE	87		88	2	88	2
SOCIAL STUDIES	-	Grade	-	Grade	-	Grade
ART	-		-		-	A
MUSIC	-		-		-	B
PHYSICAL EDUCATION	-		-		-	B

OVERALL
Total Achievement Level (AL) Score : 15
Attendance : 95/95
Class for Next Year : P6-CH
Subject Combination for Next Year : 3S1F(FSC)

AL will **not** be reflected for WA

Update from "Grade" to "AL"

New Field to compute "Total AL Score"

SCORING FOR FOUNDATION LEVEL SUBJECTS



FOUNDATION SUBJECTS GRADED IN 5 BANDS TODAY

- Under the current PSLE grading system, Foundation subjects are graded in 5 scoring bands from Grade 1 to U.

Current System	
Grade	Raw Mark Range
1	85 – 100
2	70 – 84
3	50 – 69
4	30 – 49
U	< 30

FOUNDATION LEVEL SUBJECT GRADES TO BE LESS FINELY DIFFERENTIATED

- Under the new AL system, to reduce fine differentiation among students, Foundation subject grades will be graded in 3 scoring bands from AL A to C.
- Like Standard subject ALs, the Foundation subject ALs will reflect a student's level of achievement, rather than how they have performed relative to their peers.

Foundation Level AL Reflected on Result Slip	Foundation Raw Mark Range
A	75 – 100
B	30 – 74
C	< 30

FOUNDATION LEVEL SUBJECT GRADES

- For the purpose of S1 posting, Foundation level AL A to AL C will be mapped to AL 6 to AL 8 of Standard level subjects respectively, to derive a student's overall PSLE Score.
- Similar to the current PSLE scoring system, this mapping is based on the learning and assessment load of the subjects, and informs students of their readiness to access the curriculum at the secondary level.

Foundation Level AL Reflected on Result Slip	Foundation Raw Mark Range	Equivalent Standard Subject AL	Standard Raw Mark Range
A	75 – 100	6	45-64
B	30 – 74	7	20-44
C	< 30	8	<20

SCORING OF FOUNDATION SUBJECTS FOR S1 POSTING

- A student's PSLE Score is the sum of the four AL scores across his/her Standard and Foundation subjects.
- Students taking Foundation subjects are eligible for the Express Course, as long as they meet the course placement criteria.
- With Full Subject-based Banding in secondary schools, students may also take subjects at a higher level for those that they are strong in.



ENGLISH	AL3
FOUNDATION MOTHER TONGUE	ALB
MATHEMATICS	AL4
SCIENCE	AL5
<hr/>	
PSLE SCORE: 19	

PLACEMENT OUTCOME	PSLE SCORE
EXPRESS	4 – 20 ←
EXPRESS / N(A) option	21 – 22
N(A)	23 – 24
N(A) / N(T) option	25
N(T)	26 – 30, with AL7 or better in both EL and MA

SCORING OF FOUNDATION SUBJECTS FOR S1 POSTING

- Example 2

AL	RAW MARK RANGE
1	≥ 90
2	85 – 89
3	80 – 84
4	75 – 79
5	65 – 74
6	45 – 64
7	20 – 44
8	< 20

Foundation Level AL Reflected on Result Slip	Foundation Raw Mark Range	Equivalent Standard Subject AL	Standard Raw Mark Range
A	75 – 100	6	45-64
B	30 – 74	7	20-44
C	< 30	8	<20



ENGLISH	AL4
FOUNDATION MOTHER TONGUE	ALB
FOUNDATION MATHEMATICS	ALB
SCIENCE	AL4
<hr/>	
PSLE SCORE: 22	

PLACEMENT OUTCOME	PSLE SCORE
EXPRESS	4 – 20
EXPRESS / N(A) option	21 – 22 ←
N(A)	23 – 24
N(A) / N(T) option	25
N(T)	26 – 30, with AL7 or better in both EL and MA

SCORING OF FOUNDATION SUBJECTS FOR S1 POSTING

- Example 3

AL	RAW MARK RANGE
1	≥ 90
2	85 – 89
3	80 – 84
4	75 – 79
5	65 – 74
6	45 – 64
7	20 – 44
8	< 20

Foundation Level AL Reflected on Result Slip	Foundation Raw Mark Range	Equivalent Standard Subject AL	Standard Raw Mark Range
A	75 – 100	6	45-64
B	30 – 74	7	20-44
C	< 30	8	<20



ENGLISH	AL5
FOUNDATION MOTHER TONGUE	ALB
FOUNDATION MATHEMATICS	ALB
SCIENCE	AL5
<hr/>	
PSLE SCORE: 24	

PLACEMENT OUTCOME	PSLE SCORE
EXPRESS	4 – 20
EXPRESS / N(A) option	21 – 22
N(A)	23 – 24 ←
N(A) / N(T) option	25
N(T)	26 – 30, with AL7 or better in both EL and MA

SCORING OF FOUNDATION SUBJECTS FOR S1 POSTING

- Example 4

AL	RAW MARK RANGE
1	≥ 90
2	85 – 89
3	80 – 84
4	75 – 79
5	65 – 74
6	45 – 64
7	20 – 44
8	< 20

Foundation Level AL Reflected on Result Slip	Foundation Raw Mark Range	Equivalent Standard Subject AL	Standard Raw Mark Range
A	75 – 100	6	45-64
B	30 – 74	7	20-44
C	< 30	8	<20



ENGLISH	AL7
FOUNDATION MOTHER TONGUE	ALB
FOUNDATION MATHEMATICS	ALB
FOUNDATION SCIENCE	ALB
PSLE SCORE: 28	

PLACEMENT OUTCOME	PSLE SCORE
EXPRESS	4 – 20
EXPRESS / N(A) option	21 – 22
N(A)	23 – 24
N(A) / N(T) option	25
N(T)	26 – 30, with AL7 or better in both EL and MA

In summary

FAMILIARISING STUDENTS AND PARENTS WITH THE NEW SYSTEM AND GUIDING THEM IN MAKING SUBJECT CHOICES

2019

Primary 4

Scoring for Foundation level subjects – to guide students and parents on whether to take Foundation level subjects at PSLE

Eligibility for Secondary School HMTL – to guide students and parents on whether to take HMTL at PSLE

2020

Primary 5

School Results in Achievement Levels (ALs) – to familiarize students and parents to the new system

2021

Primary 6

Release of Indicative AL COPs – to guide students and parents in making school choices





Building Partnerships between School and Parents

Help your child succeed in life

Our children do best when schools and parents work hand in hand to support them. Here are some tips to make this happen...

Work with the school to know and support your child

- Have regular conversations with teachers in both academic and non-academic areas – this will help you better guide your child's development.
- Check the teachers' preferred mode of communication – they are not required to share their mobile numbers.
- Understand that teachers may not be able to respond to your queries immediately.

Help your child relate to others

- Work with the teachers to help your child respect differences and resolve disagreements amicably.
- Let the school verify the facts in any incident before taking action to ensure a fair, objective outcome for all parties.



Help your child develop good habits

- Create a conducive home environment for your child to enjoy reading and to finish his/her homework by himself/herself.
- Encourage your child to live a healthy, balanced life with time for sleep and play.

Help your child manage himself/herself

- Guide your child in managing his/her time.
- Encourage your child to help out with household chores.

Our children succeed when parents and schools work hand in hand.



Ministry of Education
SINGAPORE

Work with the school to know and support your child

- Have regular conversations with teachers in both academic and non-academic areas – this will help you better guide your child's development.
- Check the teachers' preferred mode of communication – they are not required to share their mobile numbers.
- Understand that teachers may not be able to respond to your queries immediately.

MOE's Guidelines for School-Home Partnership



Respect the teacher's time, contact the teacher during school operating hours only.



To enhance work-life harmony for all our staff, we would like to seek your support to communicate with staff only on weekdays and during school operations hours (7.15 am – 5.30 pm).

E-mail addresses of all our staff are available from our school's website. It is much appreciated if you can make an appointment first should you wish to have a meeting with any staff member.

MOE's Guidelines for School-Home Partnership



If you keep going to the teacher for daily updates, your child will miss the chance to learn about responsibility.

MOE's Guidelines for School-Home Partnership



By letting your child forget, you are helping him/her remember.

Help your child relate to others

- Work with the teachers to help your child respect differences and resolve disagreements amicably.
- Let the school verify the facts in any incident before taking action to ensure a fair, objective outcome for all parties.



MOE's Guidelines for School-Home Partnership



Be open to the teacher's feedback and observations, and you may learn something new about your child.

Help your child develop good habits

- Create a conducive home environment for your child to enjoy reading and to finish his/her homework by himself/herself.
- Encourage your child to live a healthy, balanced life with time for sleep and play.

MOE's Guidelines for School-Home Partnership



Set up a conducive home environment for your child to learn effectively.



By having good home routines, you are setting your child up for life.

Help your child manage himself/herself

- Guide your child in managing his/her time.
- Encourage your child to help out with household chores.

MOE's Guidelines for School-Home Partnership



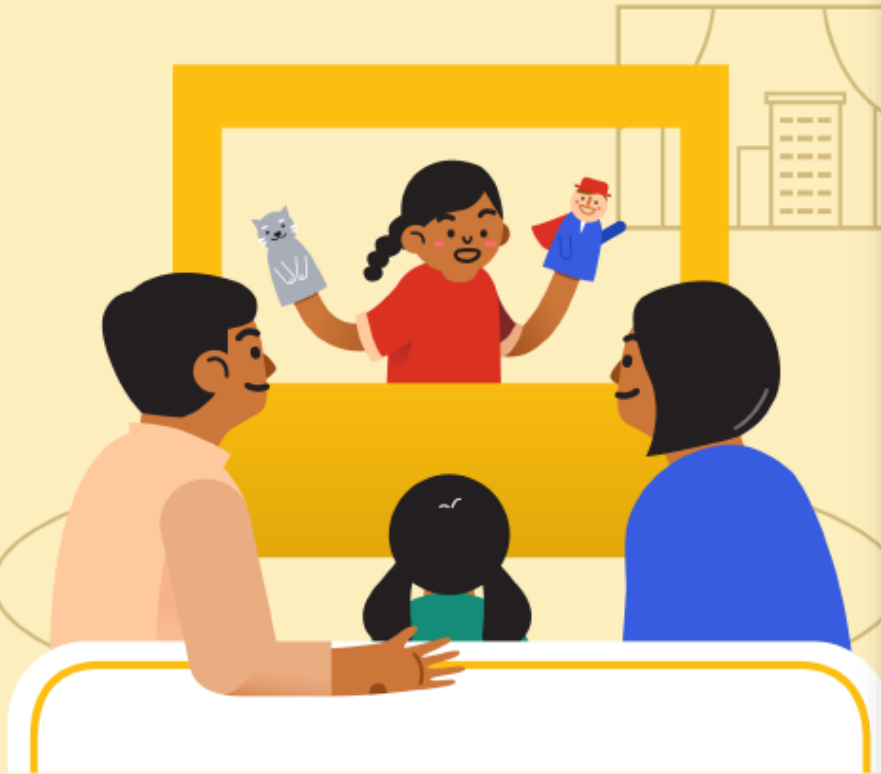
If you do your child's homework, he/she will lose the opportunity to learn.

MOE's Guidelines for School-Home Partnership



Have heart-to-heart talks with your child. You may be surprised by what you hear!

MOE's Guidelines for School-Home Partnership



By building on your child's strengths and interests, you are helping him/her find his/her place in the world.

MOE's Guidelines for School-Home Partnership



Say yes to school activities! Not all lessons are learnt in the classroom.

PDPA (Personal Data Protection Act)

- We would like to inform you that photographs/videos of students/parents taken at all school events by our official school photographers may be published on the school's official media platforms (eg: newsletters, school website or similar platforms) and used for briefings, workshops and other educational purposes. The school may publish photographs, videos and students' work/achievements together with the names of the students from time to time. Please notify the school in writing if you do not wish to grant such permission.
- Page 20 of Student Handbook 2020.

Today's slides will be made available at our school's website:

The image shows a screenshot of the Endeavour Primary School website. The header includes the school logo (ENDEAVOUR PRIMARY EDP 毅勤小学) and the name ENDEAVOUR PRIMARY SCHOOL. Navigation links for ABOUT US, DEPARTMENTS, PARENTS HUB, and CONTACT US are visible. The PARENTS HUB dropdown menu is open, listing various resources. Two orange arrows point to 'PARENTS HUB' and '2020 Slides'. The background features a photo of children playing with LEGO bricks and another of children in a classroom. A blue banner at the bottom left says 'ANNOUNCEMENTS'.

ENDEAVOUR PRIMARY
EDP
毅勤小学

ENDEAVOUR
PRIMARY SCHOOL

ABOUT US DEPARTMENTS PARENTS HUB CONTACT US

- Parents Gateway
- Sexuality Education Programme
- Cyber Wellness
- Family Matters @ School (FMS)
- Workshops and Briefings ^
- 2020 Slides
- 2019 Slides
- Parents In Education
- Principal's Letters v
- NLB discoverReads
- 2020 Booklist
- Yearly Newsletter
- Announcements

ANNOUNCEMENTS





Thank you and have a
great weekend!