



# Parents Networking Session (P6) 2022

---

21 JAN 2022

# Webinar Platform

---

## Q&A Feature

1. Parents are welcome to use the Q&A function to post your questions.
2. We will try our best to address the queries live. If there are any queries that we are not able to address during the webinar, we will email our reply to you.
3. For any subsequent queries that you may have, you are most welcome to email/contact the school.

# Briefing Overview

---

- Assessments & Vacation Lessons
- Direct School Admission
- Changes to PSLE scoring system
- Sharing by HODs
  - English Language and Mother Tongue
  - Mathematics and Science

# Personnel to support Well-being

---

- School Development Team (SDT):
  - Assistant Year Head for P6 – Mr Sani
  - AED (Learning Behavioural Support) – Mr Muhammad & Mdm Siti Nadia
  - School Counsellor – Miss Clara Lim

# Assessments and Examinations

---

	Assessment	Weightage
Term 1	-	-
Term 2	SA1	30%
Term 3	Prelim	70%
Term 4	PSLE	-
Overall		100%

# Remedial & Supplementary Lessons

---

Term 1	Term 2	Term 3	Term 4
<ul style="list-style-type: none"><li>Remedial for selected students</li></ul> Mon: Math & Science Thurs: English & Mother Tongue		<ul style="list-style-type: none"><li>Supplementary lessons</li></ul> *PSLE Oral Exams	*PSLE LC & Written papers

# School Vacation Lessons

---

- June

- Thu 23 Jun & Fri 24 Jun (last 2 weekdays of school vacation, just before school reopens on Mon 27 Jun)

- September

- Thu 8 Sep & Fri 9 Sep (just before school reopens on Mon 12 Sep)

- Please do not bring your child on cruises/overseas for vacation/return to home country\* during term time, unless it is critical and urgent.

\* Assuming overseas travel is permitted based on advisory from MOH, eg: VTLs

---

# Direct School Admission (DSA)



# Direct School Admission

---

Direct School Admission (DSA) for Secondary Schools provides students an opportunity to enrol in a school based on their talents, potential and achievements that cannot be demonstrated through the Primary School Leaving Examination (PSLE). Usually applications open from April to July.

P6 students and parents can make applications via a common online portal.

# Direct School Admission

---

Primary 6 students can apply for DSA-Sec based on a wide-range of talents, including:

- Sports and games
- Visual, literary and performing arts
- Debate and public speaking
- Science, mathematics and engineering
- Languages and humanities
- Uniformed groups
- Leadership (e.g. prefects)

# Direct School Admission

Schools	Areas
Canberra Secondary	Photography/ Videography (Girls and Boys)
Woodlands Secondary	Community and Youth Leadership (Girls and Boys)
Ahmad Ibrahim Secondary	Critical Social Inquiry and Media Literacy (Girls and Boys), Music (Girls and Boys), Outdoor/ Adventure Education (Girls and Boys)
Chung Cheng High (Yishun)	Basketball (Boys), Chinese Dance (Girls), Chinese Orchestra (Girls and Boys), Choir (Girls and Boys), Concert/ Symphonic Band (Girls and Boys), Drama - Chinese (Girls and Boys), Fencing (Girls and Boys), Guzheng Ensemble (Girls and Boys), International Dance (Girls and Boys), Volleyball (Girls and Boys), Wushu (Girls and Boys,)

# EDP DSA

---

Some of the schools our students had DSA to in the past few years:

- Raffles Institution
- Bukit Panjang Govt High School
- Kuo Chuan Presbyterian Secondary
- Naval Base Secondary
- Admiralty Secondary
- Chung Cheng High (Yishun)
- CHIJ St Nicholas' Girls' School
- Canberra Secondary
- Yishun Town Secondary
- Evergreen Secondary
- School of the Arts (SOTA)
- Victoria School
- Presbyterian High School
- Nanyang Girls' High School
- Deyi Secondary
- Yishun Secondary



# Direct School Admission for secondary schools (DSA-Sec)

*P6 students can seek admission to certain secondary schools based on their talent in sports, CCAs and specific academic areas. Learn if your child is eligible and how to apply.*

## What is DSA-Sec?

Direct School Admission for secondary schools (DSA-Sec) allows students to apply to some schools before taking the PSLE.

Students apply based on their talent in sports, CCAs and specific academic areas.

[Help us improve](#) **Ask Jamie @ MOE**

Ask about P1, S1, JAE, MK, DSA, RS, PSEA, School Fees, SCC



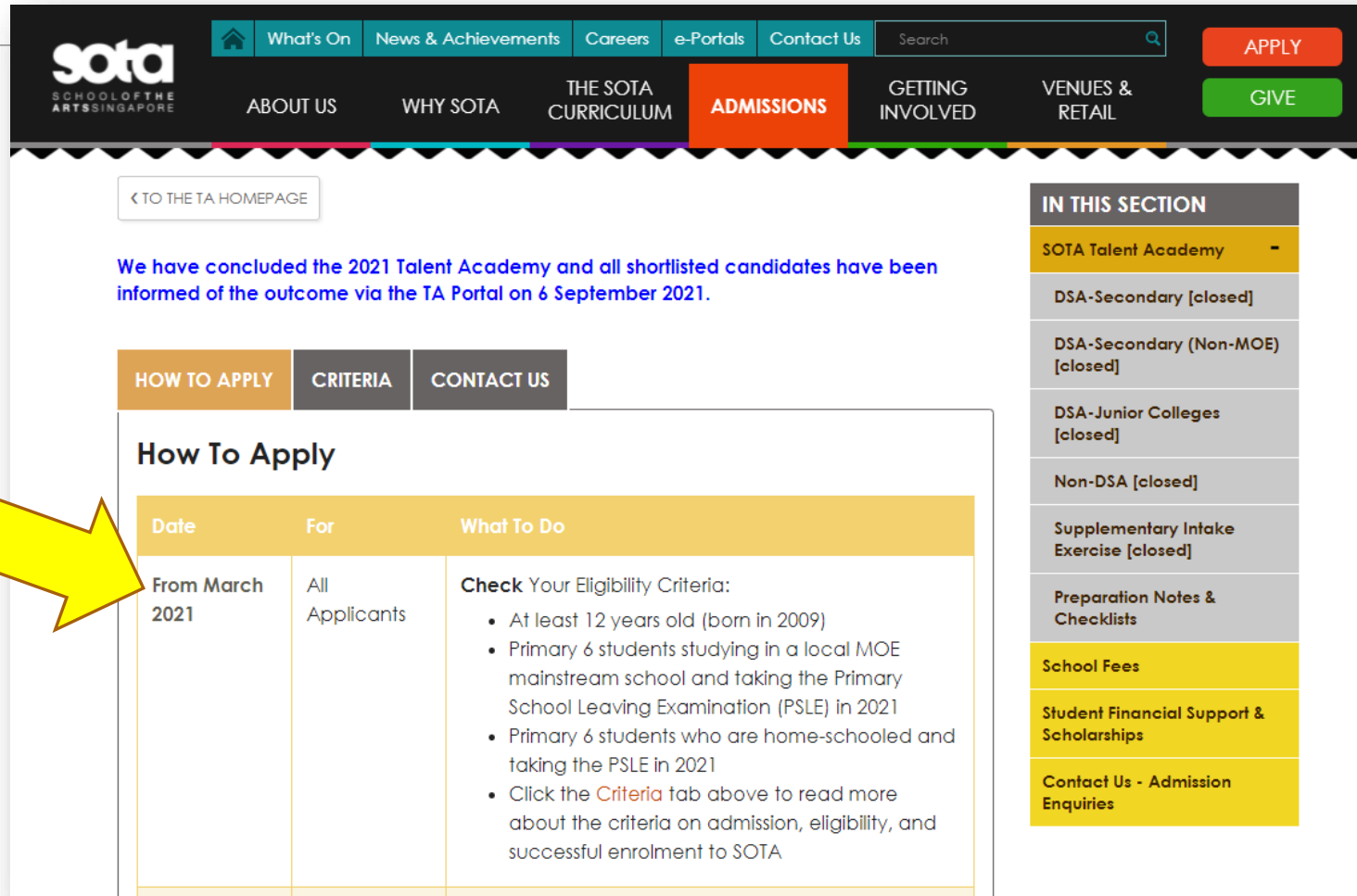
# Direct School Admission

---

Some schools accept DSA applications as early as March or April so please do visit the school's website for more information.

Go for their e-open houses.

# Direct School Admission



**sota**  
SCHOOL OF THE ARTS SINGAPORE

What's On News & Achievements Careers e-Portals Contact Us Search

ABOUT US WHY SOTA THE SOTA CURRICULUM **ADMISSIONS** GETTING INVOLVED VENUES & RETAIL

APPLY GIVE

[← TO THE TA HOMEPAGE](#)

We have concluded the 2021 Talent Academy and all shortlisted candidates have been informed of the outcome via the TA Portal on 6 September 2021.

HOW TO APPLY CRITERIA CONTACT US

### How To Apply

Date	For	What To Do
From March 2021	All Applicants	<b>Check Your Eligibility Criteria:</b> <ul style="list-style-type: none"><li>• At least 12 years old (born in 2009)</li><li>• Primary 6 students studying in a local MOE mainstream school and taking the Primary School Leaving Examination (PSLE) in 2021</li><li>• Primary 6 students who are home-schooled and taking the PSLE in 2021</li><li>• Click the <b>Criteria</b> tab above to read more about the criteria on admission, eligibility, and successful enrolment to SOTA</li></ul>

**IN THIS SECTION**

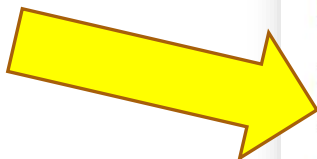
- SOTA Talent Academy -
- DSA-Secondary [closed]
- DSA-Secondary (Non-MOE) [closed]
- DSA-Junior Colleges [closed]
- Non-DSA [closed]
- Supplementary Intake Exercise [closed]
- Preparation Notes & Checklists
- School Fees
- Student Financial Support & Scholarships
- Contact Us - Admission Enquiries

### ADMISSION PROCESS FOR PRIMARY 6 STUDENTS TO SPORTS SCHOOL



### Timeline for 2022 Secondary 1 intake

Date	For Who	What To Do
1 March to 30 April 2021 (Main phase for Admission)	Interested P6s	Apply and upload the supporting documents via <a href="https://go.gov.sg/ssp-application-enrol">https://go.gov.sg/ssp-application-enrol</a>







中正中学 (义顺)  
Chung Cheng High School (Yishun)

Home > Admission > Direct School Admission (DSA) > DSA-Sec > Application

## Application

Application for DSA-Sec can be submitted through the online DSA-Sec Portal. The application is free-of-charge and will be open from **5 May 2021, 11am to 1 Jun 2021, 3pm**.

Follow these steps to apply:

1. Log in to the DSA-Sec portal with your SingPass. Find out [how to register for a SingPass](#) if you don't have one.
2. You can indicate up to 3 choices and 3 talent areas.
3. You may indicate up to 2 talent areas for the same secondary school. If you are keen to apply for 2 talent areas offered by the school, you must indicate both talent areas as separate choices.
4. You may provide information for up to 10 non-school based activities and achievements which are related to your child's chosen talent areas.
5. There is no need to submit any supporting documents during application. Your child's primary school records (for example, P5 academic results, CCA, school-based activities, achievements or awards) will be automatically shared with the schools.
6. Enter your contact details correctly. This allows the schools to contact you if your child is shortlisted for the selection process.
7. If you are unable to apply online, approach your child's primary school for assistance.

## Admission

Overview

 Application

Criteria and Selection Process

Selection Outcome

Exercise School Preference Stage

School Allocation Results

Frequently Asked Questions

Contact Us

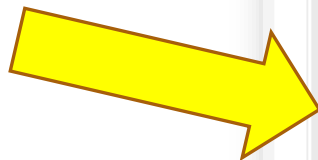


**YISHUN TOWN**  
**SECONDARY SCHOOL**

## Key Dates

DSA-Sec selection work-flow and Key Dates

S/N	Key Date & Time Frame	Activity
1	5 <sup>th</sup> May	All CCA information on the school website will be updated. Generic DSA-Sec criteria for each talent area offered can be found on school website. The selection criteria and details of the technical trial specific for each talent areas will be updated by early-Jun.  For more information on DSA-Sec, please refer to MOE website at <a href="https://moe.gov.sg/dsa-sec">https://moe.gov.sg/dsa-sec</a>
2	5 <sup>th</sup> May, 9 a.m. – 1 <sup>st</sup> June 3 p.m.	Application Period Application for DSA-Sec can be submitted through the online DSA-Sec portal. The application is free of charge.
3	1 <sup>st</sup> June	Close of DSA-application
4	17 <sup>th</sup> June – 9 <sup>th</sup> July	Download of application





### Important dates

1. The application period is from **5 May, 11am - 1 June 2021, 3pm**.
2. All short-listed candidates will be notified by **25 June 2021** to attend an interview via video conferencing. Selection phase is from **28 June to 13 September 2021**.
3. All applicants will be notified of the outcome of their application by **16 September 2021**.
4. Students who are offered a DSA-Sec place will need to exercise their School Preference within the period from **25 October to 29 October 2021**. This can be done online through the DSA-Sec Portal.

### How to apply

Application for DSA-Sec can be submitted through the online DSA-Sec Portal. The application is free-of-charge and will be opened from 5 May 2021, 11am to 1 June 2021, 3pm. For more details, please refer to MOE website – <https://www.moe.gov.sg/dsa-sec>.

# New PSLE Scoring System



[New PSLE Scoring System](#)

[Score Calculator](#)

[Posting to Secondary School](#)

[Full Subject-Based Banding](#)

[Resources](#) ▾

## New PSLE Scoring System

The revised PSLE scoring system in 2021 will help your child focus on their learning instead of how they compare to others.



Help us improve by sharing your feedback.

The PSLE is a useful checkpoint to gauge your child's understanding of key concepts and academic strengths. This will help your child learn at a suitable pace when they progress

<https://www.moe.gov.sg/microsites/psle-fsbb/psle/main.html>

# Score Calculator

Which course in secondary school will your child be eligible for? Can your child take subjects at a more demanding level in secondary school?

Use the PSLE Score Calculator below to find out.

English Language

Select Score



Mathematics

Select Score



Science

Select Score



Mother Tongue Language

Select Score



- My child is / I am exempted from taking Mother Tongue Language,  
or is taking an Asian Language / Foreign Language in-lieu of a





### [Changes to Secondary 1 \(S1\) Posting in 2021](#)

Choice order will be introduced as a new tie-breaker to recognise the different considerations that families have in making school choices.



### [Guidelines on choosing secondary schools](#)

There are many factors to consider when choosing a suitable secondary school for your child. Find out how you and your child can choose a school that will best suit your child's strengths and interests.



### [FAQs](#)

Read this list of commonly asked questions and answers on the new S1 Posting changes and Indicative AL COPs.





### What is Full SBB?

Full SBB is part of MOE's ongoing efforts to nurture the joy of learning and develop multiple pathways to cater to the different strengths and interests of our students.



### Secondary school experience under Full SBB

Find out more about Secondary 1 postings, form classes, subject offerings, Common Curriculum and other changes under Full SBB.



### Which schools are currently implementing Full SBB?

In 2022, a total of 59 secondary schools are implementing Full SBB.

### Timeline

**2020**

Start of Full SBB pilot in 28 secondary schools

**2021**

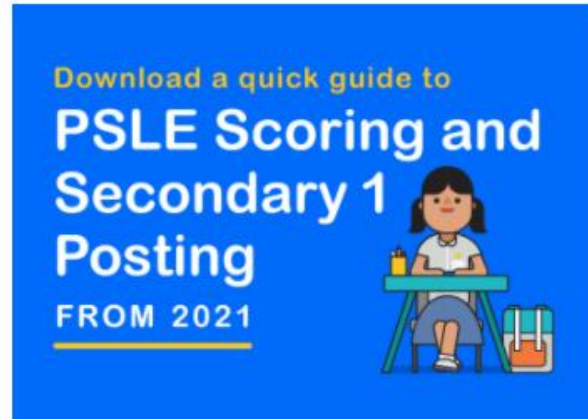
First cohort of Primary 6 students undergo new PSLE scoring and Secondary 1 (S1) posting system

**2022-2024**

Progressive roll-out of Full SBB to more secondary schools



## Resources



Quick Guide

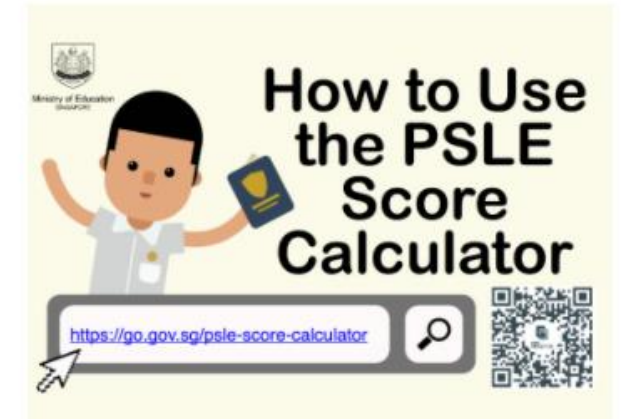
English 中文 Bahasa Melayu தமிழ்

### Tie-breakers in the new S1 Posting System

Tie-breakers are used only if there is more than one student with the same PSLE score vying for the last available place in a school. Here's a simplified example.



Tie-breakers in the new S1 Posting System



How to use the PSLE Score Calculator



How to Use  
SchoolFinder



MYTHS  
VS FACTS



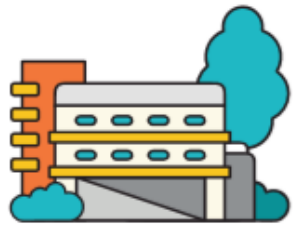
Are you a **P.S.L.E**  
Parent?



Parent Kit  
Missed our



# Infosheet on PSLE Changes



A QUICK  
GUIDE TO



# PSLE Scoring and Secondary 1 Posting



FROM 2021

Is your child preparing for the PSLE this year? Here are 6 things you need to know about the PSLE.

From 2021, the PSLE T-Score will be replaced with wider scoring bands, known as Achievement Levels.

## 1 From T-Score to ALs

Each PSLE subject will be scored using **8 Achievement Levels (ALs)**, with AL 1 being the best. Each AL will reflect your child's individual level of achievement in that subject, regardless of how his or her peers have performed.

AL	Raw mark range
1	≥90
2	85-89
3	80-84
4	75-79
5	65-74
6	45-64
7	20-44
8	<20

Starting from Primary Five onwards, your child will receive their school-based examination results in ALs to help familiarise them with the new scoring system.

## 2 Scoring for Foundation level subjects

If your child is taking Foundation subjects, that subject will be graded AL A to AL C.

The AL A to AL C will then be mapped to a Standard level subject to derive a student's overall PSLE score, as shown below.

Grades for Foundation subjects	Foundation raw mark range	Equivalent Standard level AL
A	75-100	6
B	30-74	7
C	<30	8

The mapping is based on the learning and assessment load of the subjects and informs students of their readiness to access the curriculum at the secondary level.



# Infosheet on PSLE Changes

## 3 Calculating PSLE score and course placement

Your child's PSLE score will be the sum of the four AL scores across their Standard and Foundation level subjects. The PSLE score ranges from **4 to 32**, with 4 being the best possible total score.

Your child will be placed in the Express, Normal (Academic) or Normal (Technical) course, based on their PSLE score. They will be able to take all subjects in secondary school at the level they are placed at.\*

Placement outcome	PSLE score
Express	4-20
Express/ N(A) Option	21-22
N(A)	23-24
N(A)/ N(T) Option	25
N(T)	26-30 <i>with AL 7 or better in both English Language and Mathematics</i>

\* Students who progress to the N(T) course must score at least an AL 7 in both English and Mathematics. This criterion is not applicable to all other secondary courses.

If your child is exempted from taking Mother Tongue Language, or is considering taking Higher Mother Tongue Language in secondary school, you can find out more via the PSLE-FSBB microsite or reach out to the school.

## 4 Subject-Based Banding eligibility in secondary school

Subject-Based Banding (SBB) in secondary school recognises and develops students' subject-specific strengths, and provides them with opportunities to reach their fullest potential.

SBB allows eligible N(A) and N(T) students to take selected subjects at a more demanding level at Secondary 1, based on their AL scores for individual subjects rather than the overall PSLE score.\*

For students offered the N(A) or N(T) course	
PSLE Standard/ Foundation subject grade	Option to take a subject at
AL 5 or better in a Standard level subject	Express level
AL 6 or better in a Standard level subject or AL A in a Foundation level subject	N(A) level

\* Students in the Express course will take all subjects at the Express level, regardless of their individual subject AL scores at the PSLE.

## Secondary 1 posting from 2021



## 5 What to expect for Secondary 1 posting

### BEFORE OCT

#### Explore schools

Learn about the considerations when choosing a school at our PSLE-FSBB Microsite.



<https://go.gov.sg/choosing-sec-schools>

### END-NOV

#### Receive PSLE results and submit school choices

Your child can submit up to 6 different school choices, in order of preference.

### END-DEC

#### Receive school posting results

The posting results will be released via MOE's S1-Internet System, SMS and through your child's primary school.

## 6 How will my child be posted?

Students with better PSLE scores will be considered first for vacancies in their chosen schools.

When two or more students with the same PSLE score vie for the last remaining place in a school, **tie-breakers** will be used in the following order to determine who gets the last place:

1. Citizenship
2. Choice order of schools
3. Computerised balloting

**NEW**  
from 2021

If there are no more vacancies in the school, students will be considered for their next indicated school choice. Students who cannot be placed in any of their indicated choice of schools will be posted to the nearest available school based on their registered address.



Learn more about how tie-breakers are applied  
<https://go.gov.sg/s1-posting-2021>  
(See 'School choice submission and tie-breakers')



Visit our PSLE-FSBB Microsite for more details and a comprehensive list of FAQ  
<https://go.gov.sg/pslefsbb>



Ministry of Education  
Singapore

[New PSLE Scoring System](#)

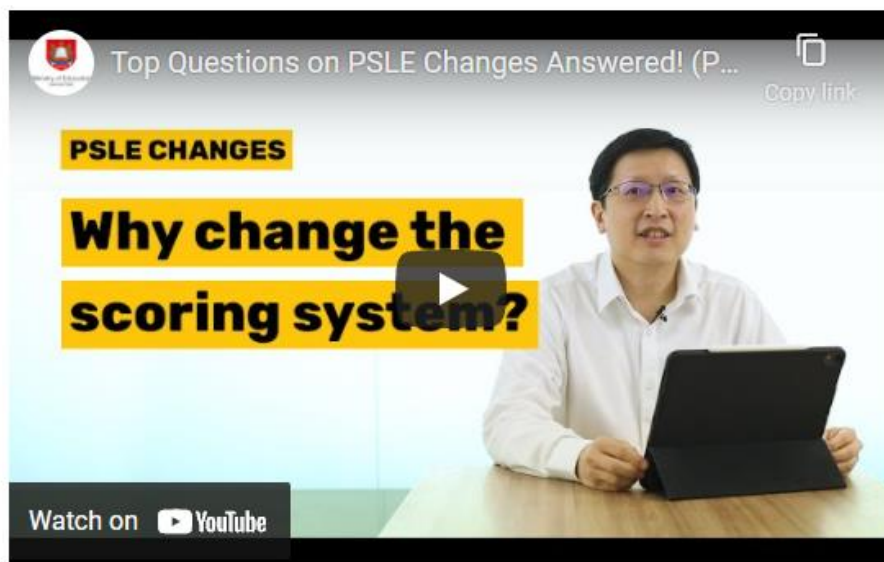
[Score Calculator](#)

[Posting to Secondary School](#)

[Full Subject-Based Banding](#)

[Resources](#) ▾

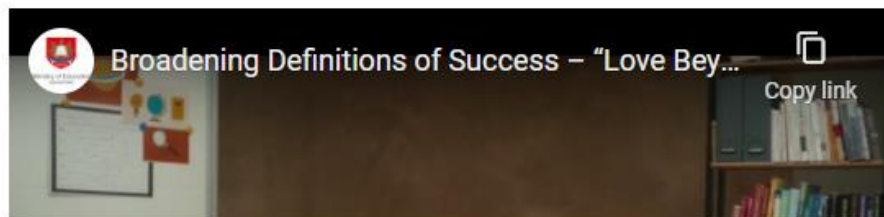
## Videos



[Top Questions on PSLE Changes Answered! \(Part 1\)](#)



[Top Questions on PSLE Changes Answered! \(Part 2\)](#)



# PSLE Dates 2022

---

Exam	Dates
Oral	Thu 11 Aug & Fri 12 Aug
Listening Comprehension	Fri 16 Sep
Written Examination	Thu 29 Sep to Wed 5 Oct

# EDP Prelim Exams

---

## 15 August to 25 August (includes [make-up days](#))

- Important for your child to take the school Prelim papers. Should your child be unable to sit for the actual PSLE papers, Singapore Examinations and Assessment Board (SEAB) will ask our school for your child's Prelim results for special consideration.
- Special consideration is a process where SEAB takes into account the adverse or unforeseen circumstances in which a candidate sat for, or missed a paper, to ensure that he/she is still fairly assessed and not disadvantaged. Examples of such circumstances include an illness or an injury.

# Resources on the new PSLE Scoring and Secondary 1 Posting Systems

---

There will be more updates from MOE HQ and we will conduct another webinar for P6 parents in April/May 2022.

# Today's slides will be made available at our school's website:

The screenshot displays the website for Endeavour Primary School. At the top left is the school's logo, which includes the acronym 'EDP' and the Chinese characters '毅勤小学'. To the right of the logo, the text 'ENDEAVOUR PRIMARY SCHOOL' is displayed. In the top right corner, there are three small 'A' icons for font size adjustment and a search icon.

The navigation menu consists of several items: 'ABOUT US', 'OUR PROGRAMMES', 'OUR CURRICULUM', 'PARENTS HUB', and 'GENERAL INFORMATION'. A yellow arrow points to the 'PARENTS HUB' menu item. Below this menu, a dropdown list is visible, containing the following items: 'Parents Gateway', 'Sexuality Education Programme', 'Cyber Wellness', 'Family Matters @ School (FMS)', 'Workshops and Briefings', '2021 Slides', '2020 Slides', 'Parents In Education', 'Principal's Letters', 'NLB discoverReads', '2022 Booklist and Uniform Order', and 'Yearly Newsletter'. A second yellow arrow points to the 'Workshops and Briefings' item in this dropdown.

The main content area features a large banner image of children in blue and white uniforms. Overlaid on this banner is a text box with the heading 'Our Vision:' and the text 'A Leading School of Vibrant Learners, Rooted in Good Values.' Below this text are five small circles, with the first one filled, indicating a carousel of slides.

At the bottom left of the page, there is a smiley face icon and the text 'Primary 1 e-Orientation 2021'. On the right side, there is a pink graphic with the text 'AESTHETICAL ATTITUDE'.



# Subject Briefings

---