

CHANGES TO PSLE IN 2021



Ministry of Education
SINGAPORE

Announced in 2016

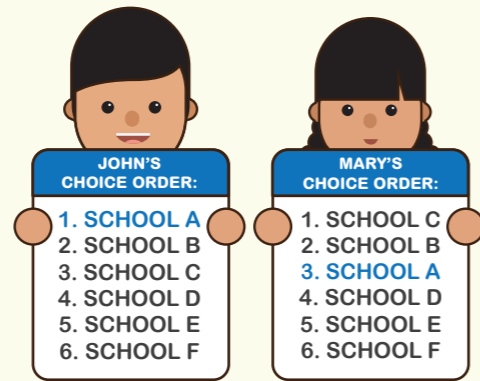
From T-score to Wider Scoring Bands



AL1
AL2
AL3
AL4
AL5
AL6
AL7
AL8

- Students are less finely differentiated on the basis of every mark. Each subject will be scored using 8 Achievement Levels (ALs), with AL1 being the best.
- Students who demonstrate similar achievement for a subject will receive the same AL, regardless of how they compare to their peers.
- These standards will remain the same from year to year.

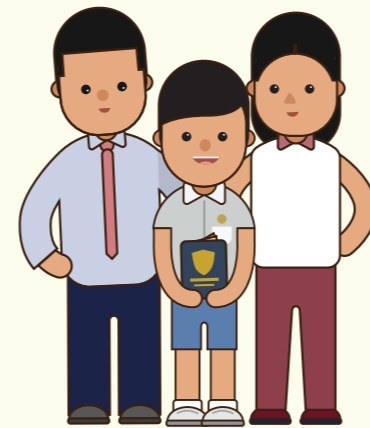
Choice Order of Schools Matters More in Posting



- While academic merit remains the first criterion for Secondary School posting, choice order as a new tie-breaker is designed to recognise the different considerations families have when choosing a suitable secondary school.
- If 2 students with the same PSLE Score vie for a place in a school, the following tie-breakers will be used:
 - Citizenship
 - Choice Order of Schools
 - Computerised Balloting

(New) Supporting Students and Parents in Making Subject Choices

Presentation of Results in Achievement Levels (ALs)

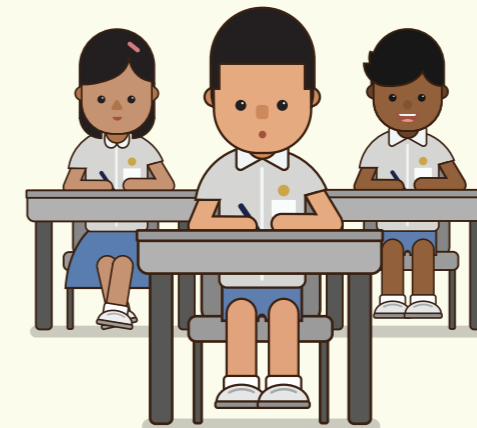


- Starting from the **2020 Primary Five (P5) cohort**, school-based examination results of P5 and P6 students will be presented in ALs to help familiarise them with the new scoring system.

Holistic Development Profile (HDP)		
Subject	Mark	AL
English	85	2
Mathematics	75	4
Science	65	5
Mother Tongue	55	6
Total AL Score: 17		

Information on Secondary Schools' indicative Cut-Off Points (COPs) will be provided in AL terms in the first half of 2021. These AL COPs will be derived from the PSLE scores and choice patterns of the 2020 Secondary 1 (S1) posting exercise.

Scoring for Foundation Level Subjects

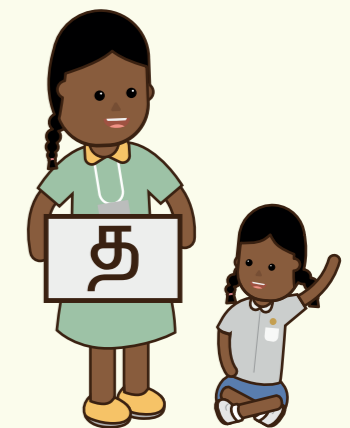


- Foundation level subjects support students who require additional help to build up strong fundamentals, giving them confidence to learn at a pace and level suited to them.
- Foundation level subjects will be graded AL A to AL C under the new scoring system.

Grades for Foundation Subjects	Foundation Raw Mark Range	Equivalent Standard Level AL
A	75-100	6
B	30-74	7
C	<30	8

- Students' PSLE Score will be the sum of the four AL scores of all Standard and Foundation subjects they take.
- For S1 posting, Foundation level subject scores will be converted to the equivalent standard level subject scores before the total score is calculated.

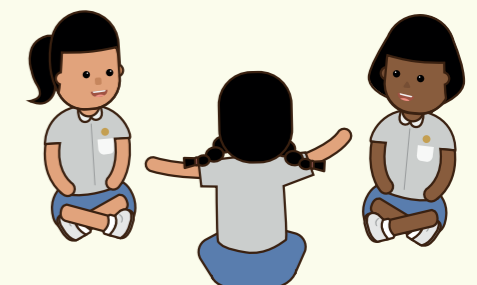
Eligibility for Sec Sch Higher Mother Tongue Language (HMTL)



- Students who are eligible for HMTL in Secondary Schools will be based off the criteria below.

Criteria Under The New Scoring System
PSLE Score of 8 or better
OR
PSLE Score of 9 to 14 inclusive; and AL1/AL2 in MTL or Distinction/Merit in HMTL

- Secondary schools have the flexibility to offer HMTL to students, if they are assessed to have high ability and interest in MTL, and are able to take HMTL without affecting their performance in other subjects.



Visit our PSLE website to find out more!



<http://bit.ly/2Xryv1v>

